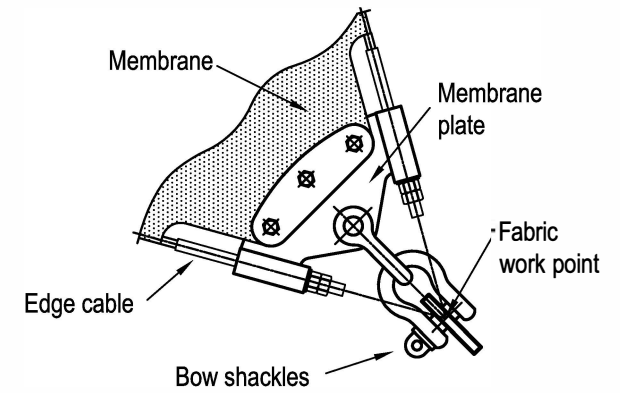
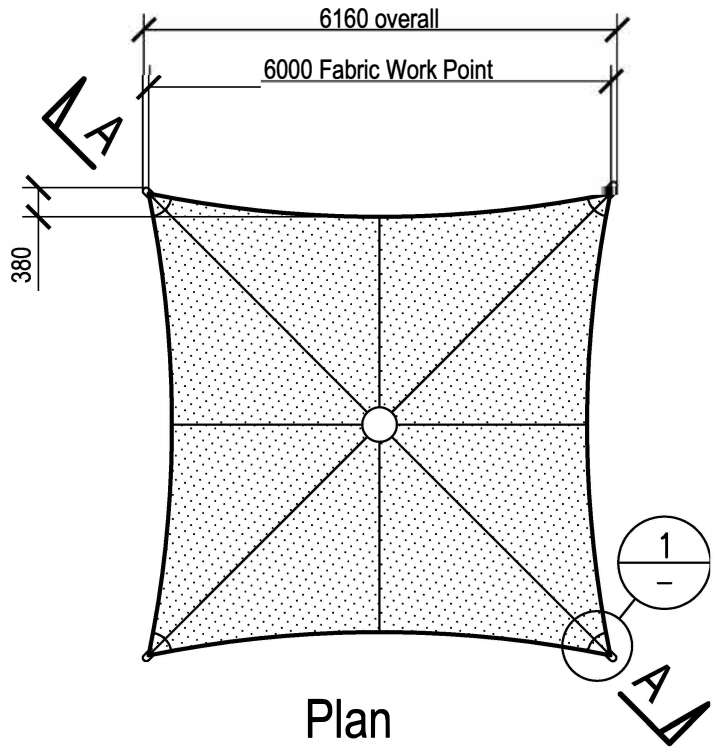


CENTRE SUPPORT - CONICAL

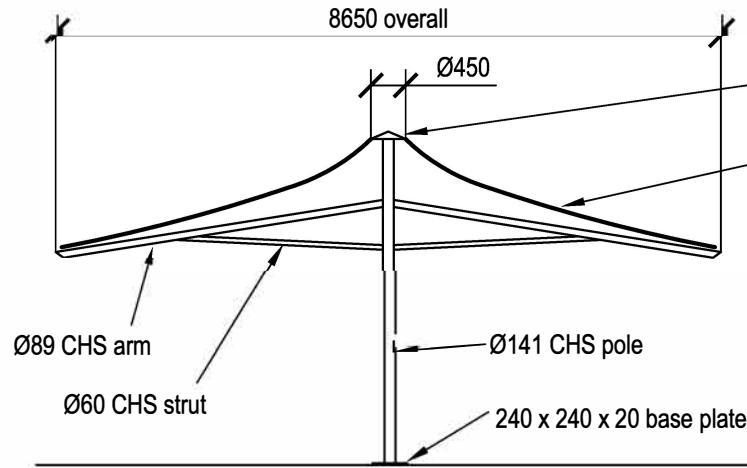
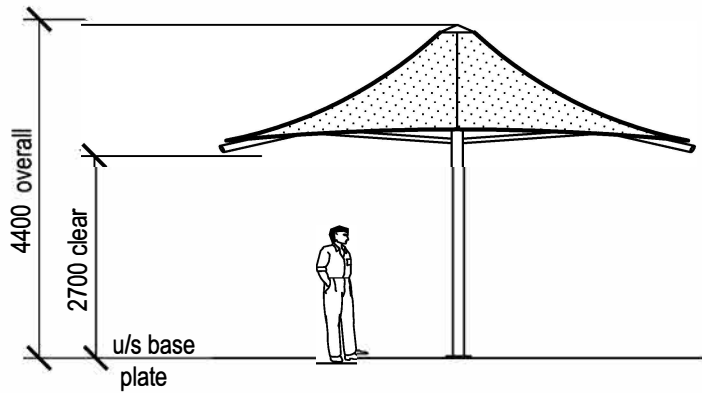
Model: SUA-MS60 (Contour Edge)

Permissible Design Wind Speed W33 (33m/sec)

- Overall dimensions represent clearance dimensions for the complete structure.
- A minimum of 100mm clearance to any buildings, poles etc. is recommended.
- Dimensions are in millimetres.



DETAIL 1
Not to scale



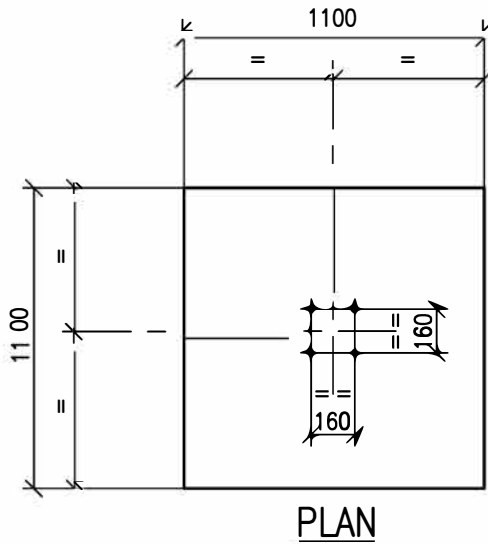
Aluminium top hat
PVC, PVDF coated fabric.
Standard colour white.

Section A-A

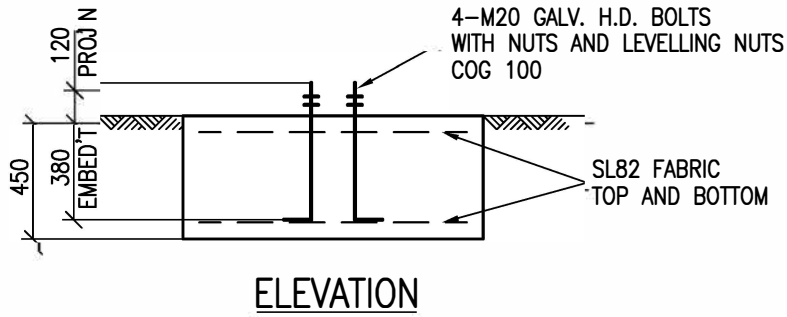


CENTRE SUPPORT - CONICAL
MODULAR UMBRELLA RANGE

Model: SUA-MS50 (Contour Edge)



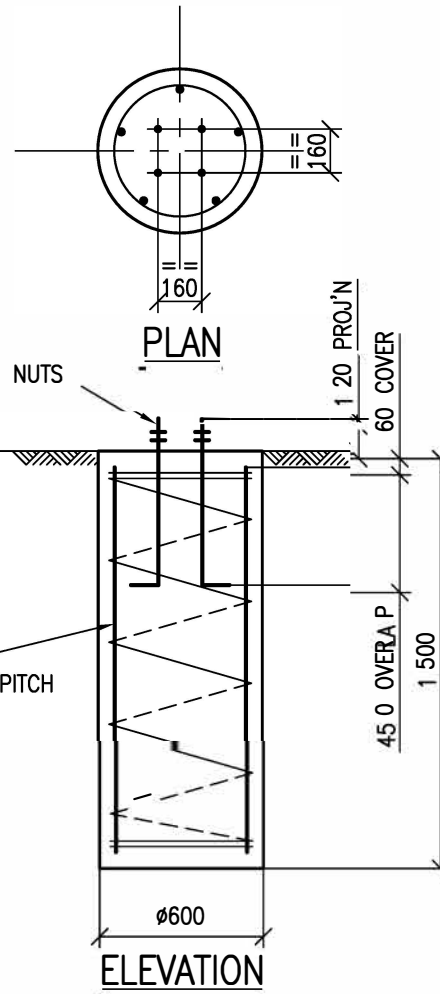
PLAN



ELEVATION

SUA-MS60 Pad Footing

1:20 AT A3



ELEVATION

SUA-MS60 Pier Footing

1:20 AT A3

PERMISSIBLE DESIGN WIND SPEED : W33 (33m/s)

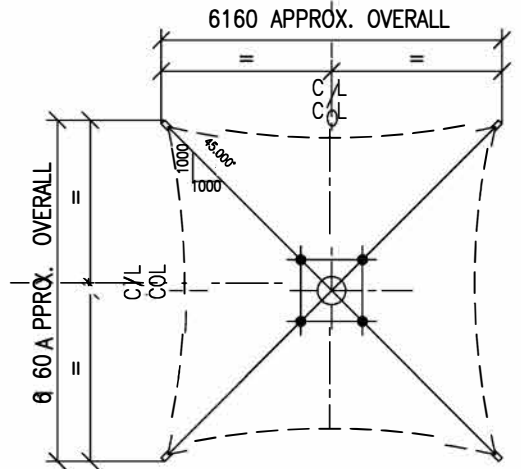
NOTES:

ASSUMED SOIL CONDITIONS:
 PAD - BEARING CAPACITY 100kPa
 PIER - $C_u=50kPa$ (STIFF CLAY)

MINIMUM 60mm COVER TO ALL REINFORCEMENT
 CONCRETE GRADE TO BE N25
 20mm AGGREGATE SIZE
 SLUMP 65mm

ANCHOR BOLT LOCATION TOLERANCES.
 PER AS 4100-1990

- 3mm FOR ANCHOR BOLT CENTRES WITHIN AN ANCHOR BOLT GROUP.
- 6mm FOR ADJACENT ANCHOR BOLT GROUP CENTRES.
- MAXIMUM ACCUMULATION OF 6mm PER 30m NOT TO EXCEED A TOTAL OF 25mm.
- 6mm FROM ANCHOR BOLT GROUP CENTRE TO COLUMN LINE CENTRE.



H.D. Bolt Layout Plan

NOT TO SCALE

CENTRE SUPPORT - CONICAL
 MODULAR UMBRELLA RANGE

Model: SUA-MS50 (Contour Edge)

