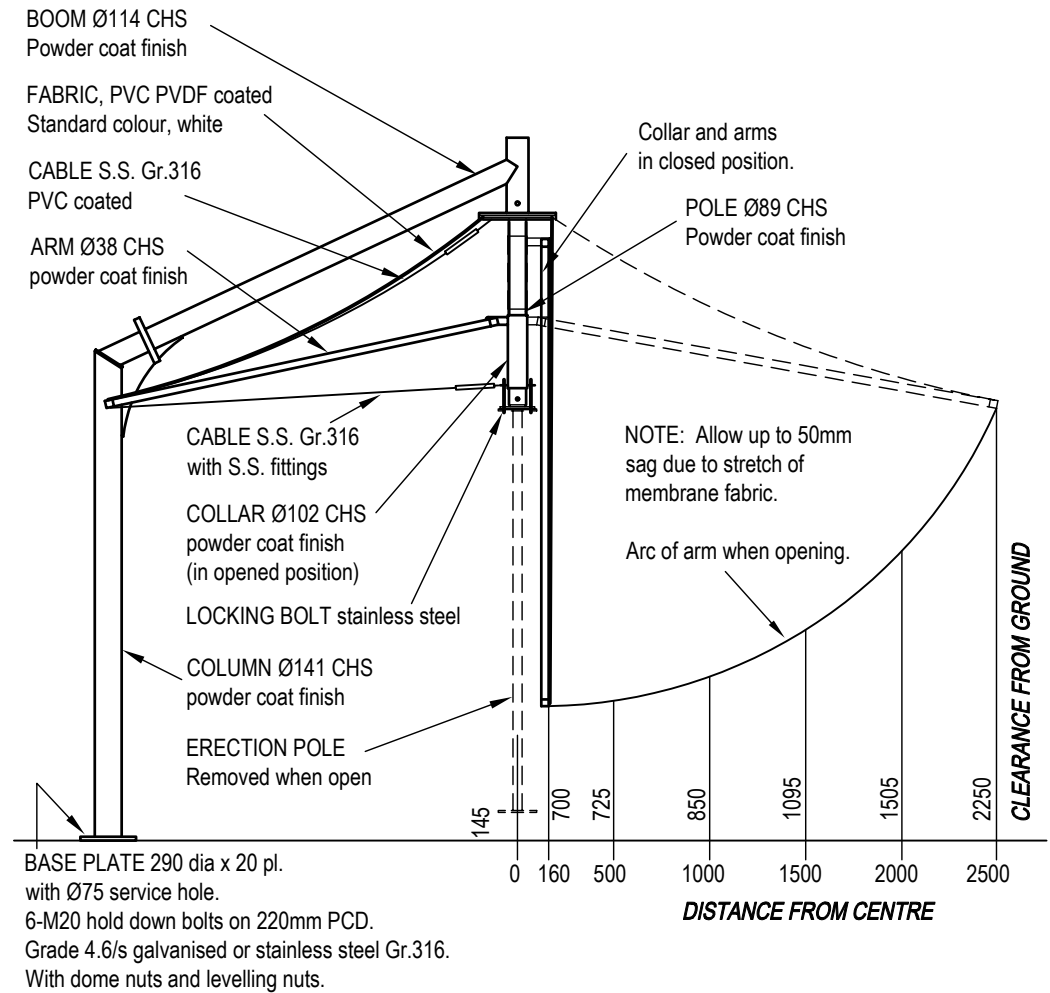
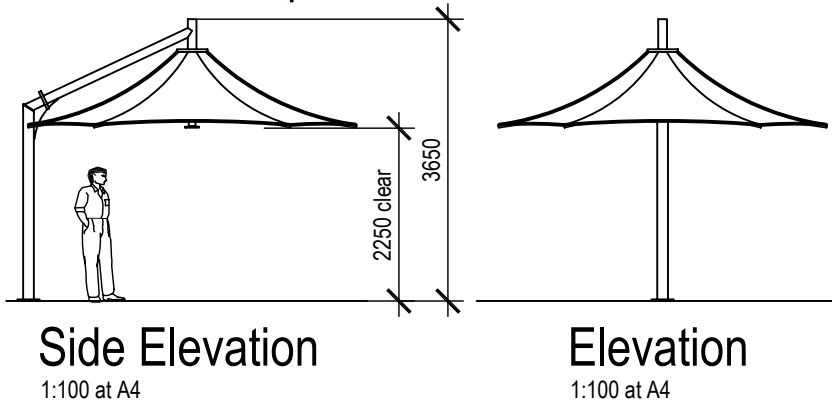
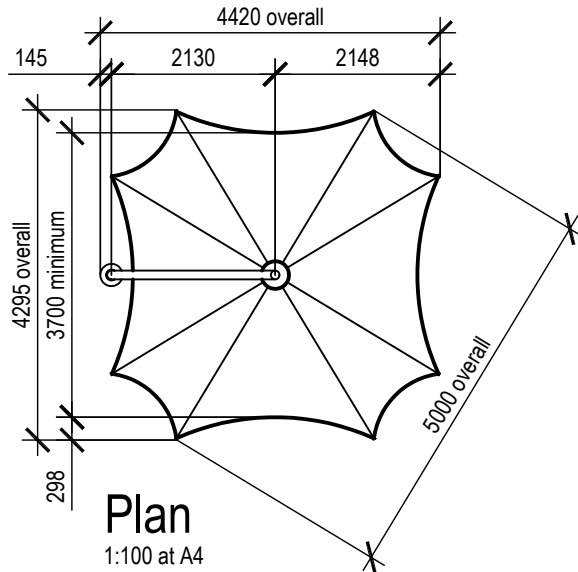


**TRUNCATED SQUARE 4.3m - LTS43**

Wind Rating: 33m/sec (120km/h)  
 Rated when umbrella is fully erected.  
 Umbrella weight: 88kg

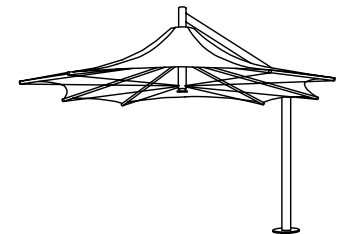
Overall dimensions represent clearance dimensions for the complete umbrella.  
 Membrane dimensions differ, depending on variations in tensioning and fabrication.  
 Dimensions are in millimetres.



OPENED POSITION  
 View square to boom

CLOSED POSITION  
 View square to arm

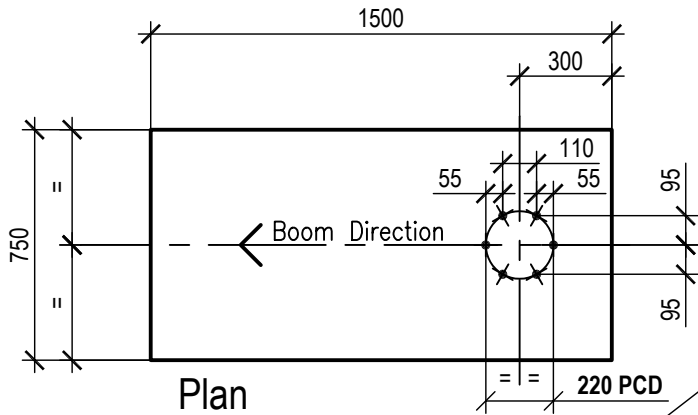
**4.3m Side Support Truncated Square  
 Model: SUA-LTS43**



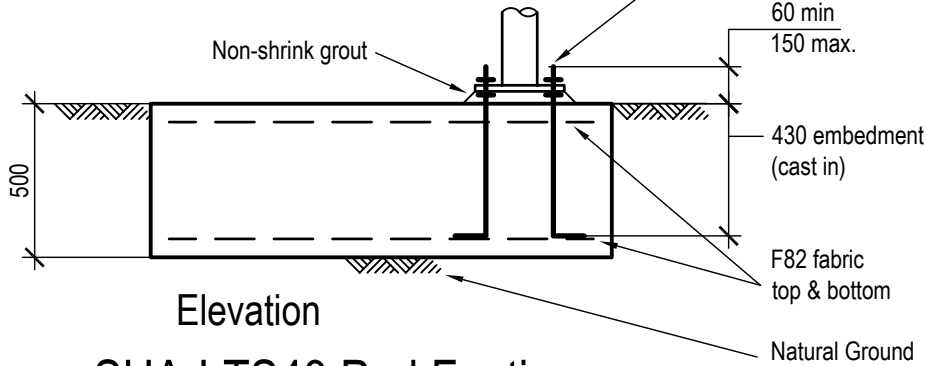
Side Support Series  
 Model: SUA-LTS43

Engineering Framing

**street  
 umbrellas**  
 Australia

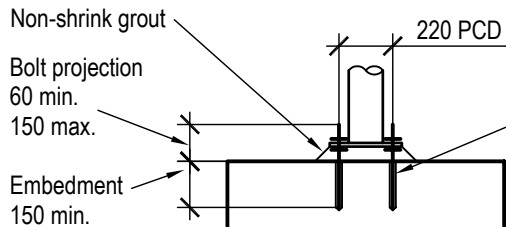


Plan



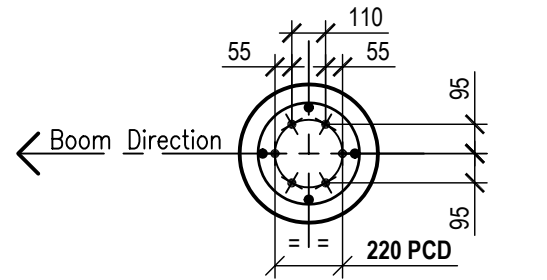
Elevation

## SUA-LTS43 Pad Footing

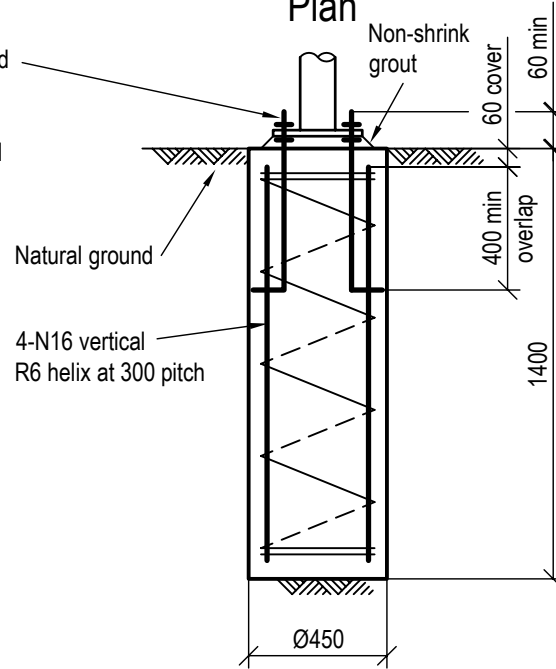


## Chemical Anchor Detail

6-M20 H.D. bolts to be threaded rod grade 4.6/s hot dipped galvanised, or stainless steel Gr.316. Supplied with nuts, washers and levelling nuts. Chemical anchors, on 220 PCD, to be **Ramset Reo 502 (or 'Hilti HIT-RE 500')**, or engineer approved equivalent, and to be installed in accordance with the manufacturer's instructions.



Plan



Elevation

## SUA-LTS43 Pier Footing

### Notes:

Design wind speed 33m/sec (W33)

Assumed soil conditions:

Pad - bearing capacity 100kPa

Pier -  $c_u=50\text{kPa}$  (stiff clay)

Minimum 60mm cover to all reinforcement

Concrete grade to be N25

20mm aggregate size

Slump 65mm

### Anchor bolt location tolerances per

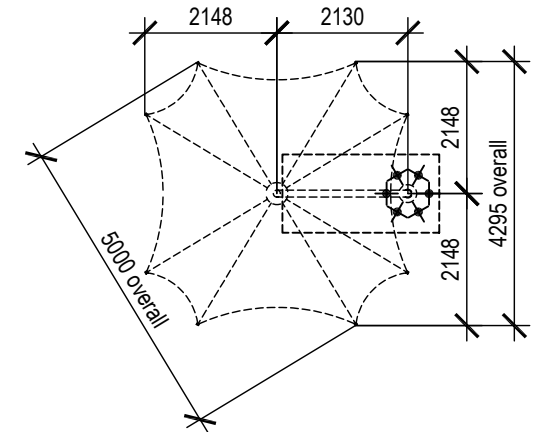
Australian Standard AS 4100-1990

- 3mm for anchor bolt centres within an anchor bolt group.

- 6mm for adjacent anchor bolt group centres.

- Maximum accumulation of 6mm per 30m not to exceed a total of 25mm.

- 6mm from anchor bolt group centre to column line centre.



## H.D. Bolt Layout Plan

Not to scale

Side Support Series  
Model: SUA-LTS43

Footings Detail

street  
umbrellas  
Australia