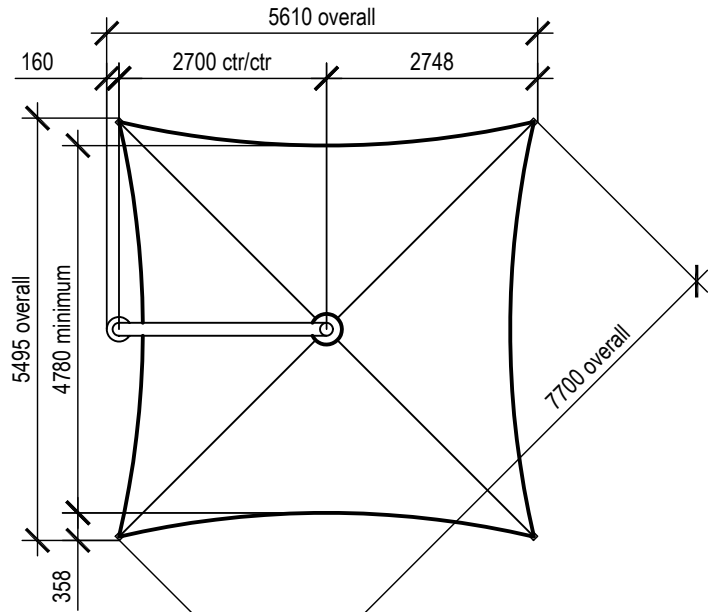


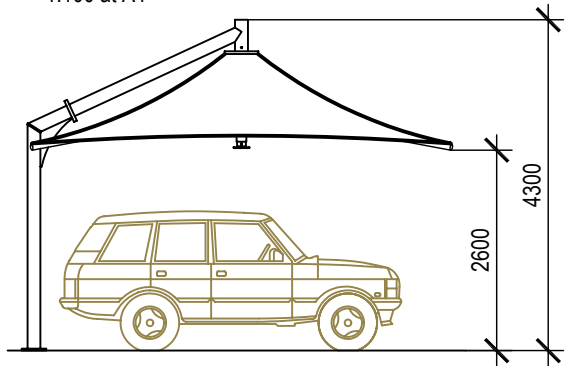
SQUARE 5.4m - LS54

Wind Rating: 33m/sec (120km/h)
 Rated when umbrella is fully erected.
 Umbrella weight: 261 kg
 Boom weight: 176 kg

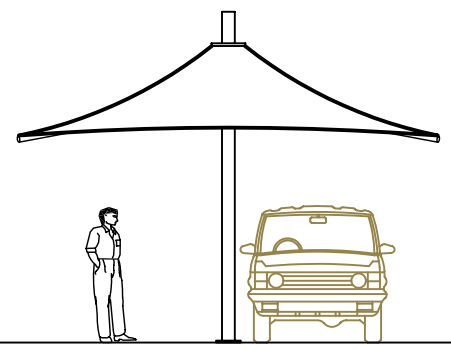
Overall dimensions represent clearance dimensions for the complete umbrella.
 Membrane dimensions differ, depending on variations in tensioning and fabrication.
 Dimensions are in millimetres.



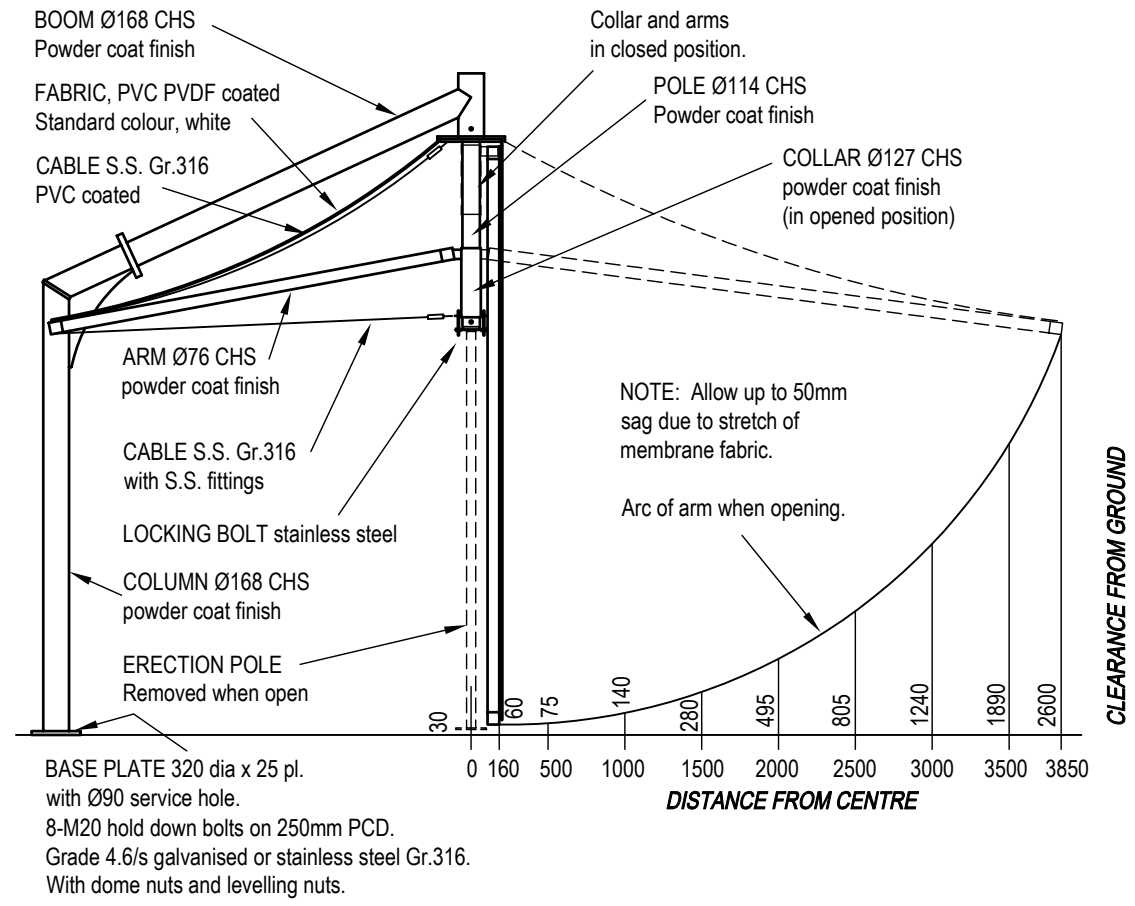
Plan
1:100 at A4



Side Elevation
1:100 at A4



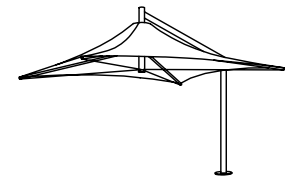
Elevation
1:100 at A4

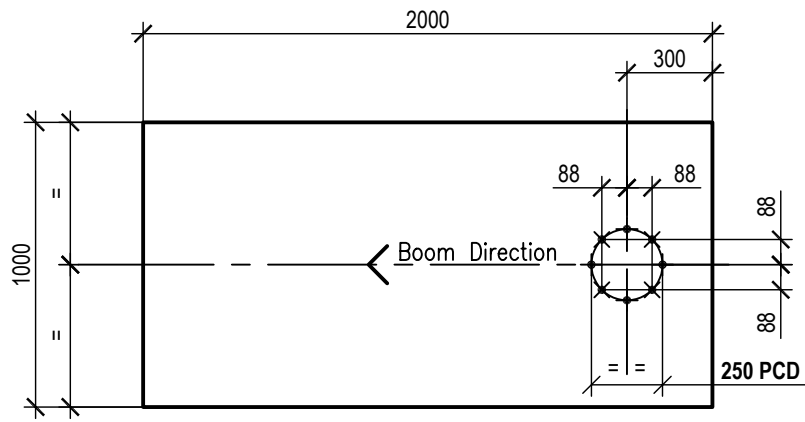


OPENED POSITION
View square to boom

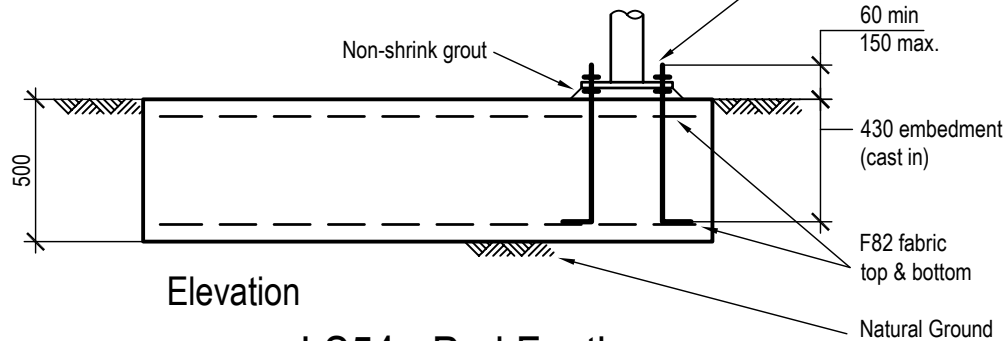
CLOSED POSITION
View square to arm

**5.4m Side Support Square Umbrella
 Model:SUA-LS54**



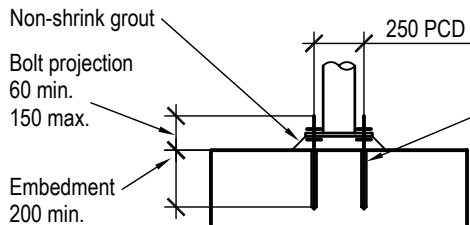


Plan



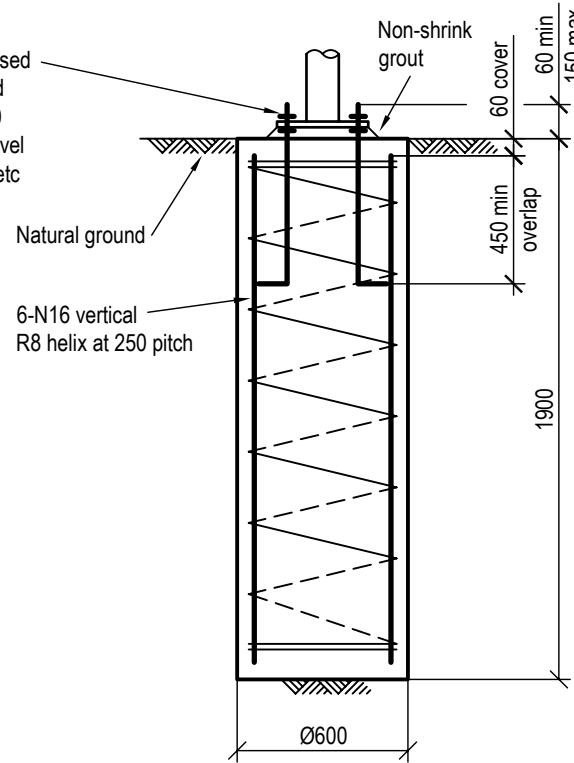
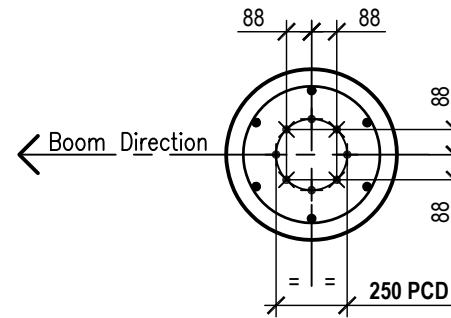
Elevation

LS54 - Pad Footing



Chemical Anchor Detail

8-M20 H.D. bolts to be threaded rod grade 4.6/s hot dipped galvanised, or stainless steel Gr.316. Supplied with nuts, washers and levelling nuts. Chemical anchors, on 250 PCD, to be **Ramset Reo 502 (or 'Hilti HIT-RE 500')**, or engineer approved equivalent, and to be installed in accordance with the manufacturer's instructions.



Elevation

SUA-LS54 Pier Footing

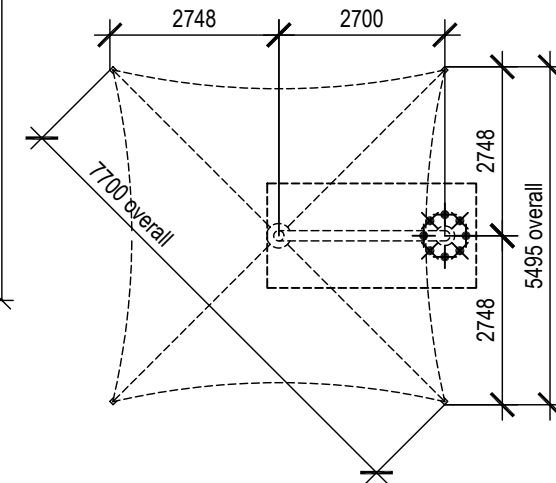
Notes:
Design wind speed 33m/sec (W33)

Assumed soil conditions:
Pad - bearing capacity 100kPa
Pier - $c_u=50\text{kPa}$ (stiff clay)

Minimum 60mm cover to all reinforcement
Concrete grade to be N25
20mm aggregate size
Slump 65mm

Anchor bolt location tolerances per Australian Standard AS 4100-1990

- 3mm for anchor bolt centres within an anchor bolt group.
- 6mm for adjacent anchor bolt group centres.
- Maximum accumulation of 6mm per 30m not to exceed a total of 25mm.
- 6mm from anchor bolt group centre to column line centre.



H.D. Bolt Layout Plan
Not to scale

Side Support Series
Model: SUA-LS54

Footings Detail

street
umbrellas
Australia