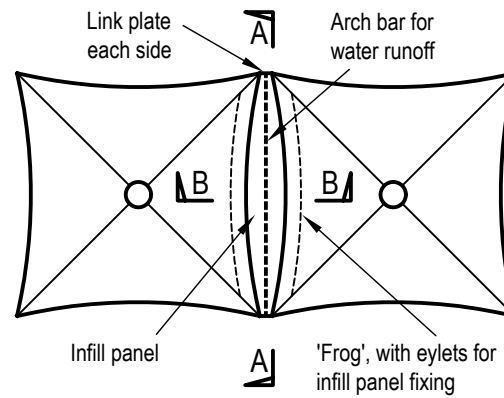


Typical Arrangement

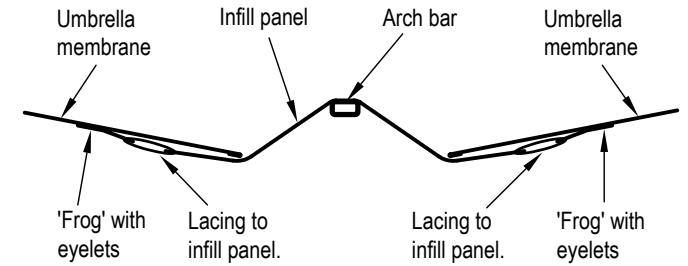
The linkage system enables these individual umbrellas to be joined together, providing expanded all-weather shade and shelter.
 The linkage system can be applied to all square models in the Centra and Leva series.
 The hexagonal and truncated square models can also be linked in special applications. (see below)

Typical Configuration

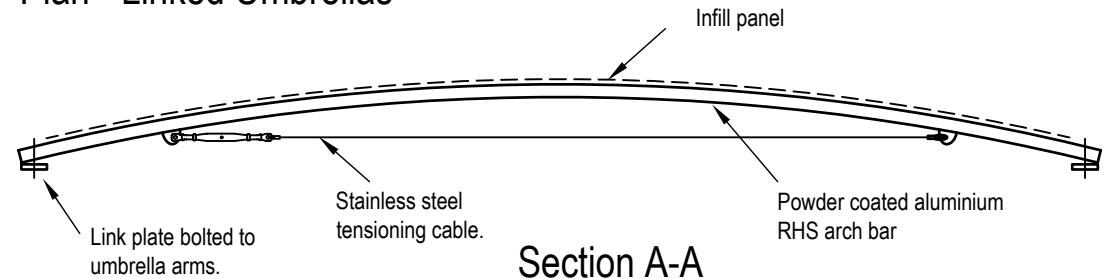
The standard spacing between umbrellas is 100mm clear.
 The minimum spacing between umbrellas is 50mm clear.
 The maximum spacing between umbrellas is 900mm clear.
 Up to 300mm clear space uses a mild steel plate link.
 Over 300mm clear space requires an aluminium RHS link.



Plan - Linked Umbrellas

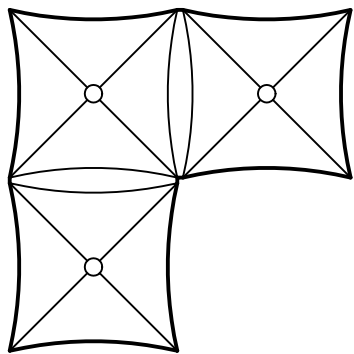


Section B-B

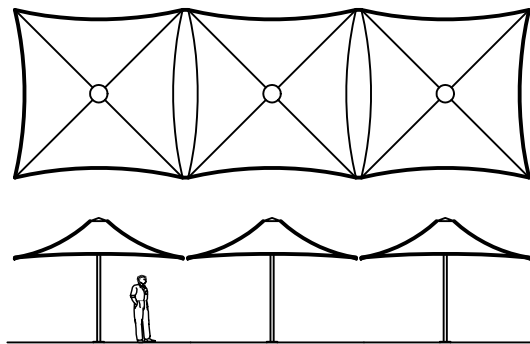


Section A-A

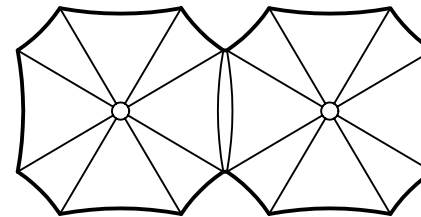
Typical Link Details



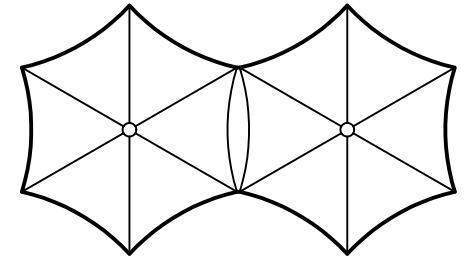
'L' Shaped Configuration



Straight Row Configuration



Truncated Square Umbrella - Model CTS43



Hexagonal Umbrella - Model CH57

Typical Link Configurations

Typical Linking Details
 Architectural Umbrellas

Linked Infills